



STAS
picture hanging systems

STAS multirail accessories





STAS multirail accessories

Assemble your STAS multirail system step by step. In this brochure we have created an overview of all rail types, light fixtures, spotlights, adapters, hooks and cords.

Step 1: choose a multirail	3
Step 2: choose a fixture	4
<ul style="list-style-type: none">• fixture "classic"• fixture "sirius"	<ul style="list-style-type: none">• fixture "signo"
Step 3: choose a spotlight	5
<ul style="list-style-type: none">• led spot 3.5 W 27°• led spot 3.5 W 95°• powered 4 W matt	<ul style="list-style-type: none">• halogen spot 20 W clear• halogen spot 20 W matt
Step 4: choose an adapter	6
Step 5: choose hooks and cords	7
STAS assembly instructions fixtures	8

For assembly instructions of the rail systems:

<http://product.stasgroup.com/en/documentation/fitting-instructions.html>

STEP 1:
choose a multirail

STEP 2:
choose a fixture

STEP 3:
choose a spotlight

STEP 4:
choose an adapter

STEP 5: choose
hooks and cords

STAS multirail systems are picture rails with integrated 12 V power supply wires (low voltage). Thanks to these wires, it is possible to click a light fixture into the rail at any spot to illuminate your wall decor.

STAS offers five rail types:

Multirail for walls:

STAS multirail
The classic, patented 12 V rail.

STAS multirail crown
The multirail crown disappears behind your moulding of choice.

STAS multirail max
The multirail max features a top rim that closes the small gap between rail and ceiling.

Multirail for ceilings:

STAS multirail flat
The multirail flat can be installed almost invisibly in plasterwork or behind flat moulding.

STAS u-rail multi
The u-rail multi was specifically designed for drop ceilings.

STEP 1: choose a multirail

STAS multirail system



STAS multirail white
VH10200 200 cm
VH10300 300 cm



STAS multirail alu
VH30200 200 cm
VH30300 300 cm

STAS multirail max system



STAS multirail max white
VC10420 200 cm
VC10430 300 cm



STAS multirail max alu
VC30420 200 cm
VC30430 300 cm

STAS multirail crown system



STAS multirail crown white
RC10420 200 cm
RC10430 300 cm

STAS multirail flat system



STAS multirail flat white
RC10520 200 cm
RC10530 300 cm
(4 holes per m²)

STAS u-rail multi system



STAS u-rail multi white
VP10200 200 cm
VP10300 300 cm
(8 holes per m²)



STAS u-rail multi alu
VP30200 200 cm
VP30300 300 cm
(8 holes per m²)

STAS multirail
matching installation accessories

- | | |
|---------|---------------------------------|
| VE10200 | STAS multirail end cap white |
| VE30200 | STAS multirail end cap alu |
| VD10400 | STAS multirail corner cap white |
| VD30400 | STAS multirail corner cap alu |

- | | |
|---------|----------------------------------|
| RD40100 | STAS rail clip (metal, 3 per m²) |
| RD40200 | STAS rail connector |
| SR30100 | STAS screw |
| SR50700 | STAS plug |

- | | |
|---------|----------------------------------------|
| VF50200 | STAS multirail conductor 12 V straight |
| VF50100 | STAS multirail conductor 12 V corner |

STAS multirail max
matching installation accessories

- | | |
|---------|-------------------------------------|
| VE10400 | STAS multirail max end cap white |
| VE30400 | STAS multirail max end cap alu |
| VD20500 | STAS multirail max corner cap white |
| VD30500 | STAS multirail max corner cap alu |

- | | |
|---------|----------------------------------|
| RD40100 | STAS rail clip (metal, 3 per m²) |
| RD40200 | STAS rail connector |
| SR30100 | STAS screw |
| SR50700 | STAS plug |

- | | |
|---------|----------------------------------------|
| VF50200 | STAS multirail conductor 12 V straight |
| VF50100 | STAS multirail conductor 12 V corner |

STAS multirail crown
matching installation accessories

- | | |
|---------|---------------------------------------------|
| RD20500 | STAS multirail crown corner connector white |
| RD20400 | STAS multirail crown rail connector |
| SJ10200 | STAS multirail crown screw |
| SR50700 | STAS plug |

- | | |
|---------|----------------------------------------|
| VF50200 | STAS multirail conductor 12 V straight |
| VF50100 | STAS multirail conductor 12 V corner |

STAS multirail flat
matching installation accessories

- | | |
|---------|--------------------------------------------|
| RD20500 | STAS multirail flat corner connector white |
| RD20400 | STAS multirail flat rail connector |
| SJ10200 | STAS multirail flat screw |
| SR50700 | STAS plug |

- | | |
|---------|----------------------------------------|
| VF50200 | STAS multirail conductor 12 V straight |
| VF50100 | STAS multirail conductor 12 V corner |



STAS u-rail multi black
VP20200 200 cm
VP20300 300 cm
(8 holes per m²)

STAS u-rail multi
matching installation accessories

- | | |
|---------|-------------------------|
| SP10100 | STAS u-rail screw white |
| SP20100 | STAS u-rail screw black |
| SP30100 | STAS u-rail screw alu |

- | | |
|---------|-------------------------------------------|
| VF50200 | STAS u-rail multi conductor 12 V straight |
| VF50100 | STAS u-rail multi conductor 12 V corner |

STAS fixtures can be clicked easily into your STAS multirail. All fixtures are compatible with all STAS multirail systems.

How to choose

- The bigger the distance between light source and wall, the bigger the artwork that can be illuminated. In other words: choose a large fixture for lighting a large work of art.
- Is your wall 270 cm high or higher? We would recommend installing a fixture of 70 cm.

Adjusting

Fixtures do not need to be adjusted by any complex process. Simply prick a bulb into the fixture and you're done. All fixtures have a flexible part with which small adjustments to the beam angle can be made.

Warranty

1 year warranty applies to all fixtures.

STEP 2: choose a fixture

STAS classic fixture

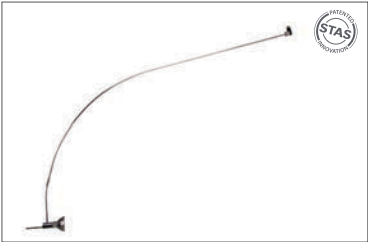


Length: 50 cm or 70 cm
Colour: white or chrome

STAS multirail classic fixtures

- | | |
|---------|---------------------------------------------|
| VA10500 | STAS multirail fixture classic white 50 cm |
| VA10700 | STAS multirail fixture classic white 70 cm |
| VA30500 | STAS multirail fixture classic chrome 50 cm |
| VA30700 | STAS multirail fixture classic chrome 70 cm |

STAS signo fixture

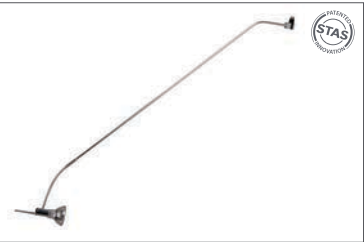


Length: 70 cm
Colour: chrome

STAS multirail signo fixtures

- | | |
|---------|-------------------------------------------|
| VA30770 | STAS multirail fixture signo chrome 70 cm |
|---------|-------------------------------------------|

STAS sirius fixture



Length: 40, 50 or 65 cm
Colour: chrome

STAS multirail sirius fixtures

- | | |
|---------|--------------------------------------------|
| VA30365 | STAS multirail fixture sirius chrome 40 cm |
| VA30465 | STAS multirail fixture sirius chrome 50 cm |
| VA30665 | STAS multirail fixture sirius chrome 65 cm |

VA30500 classic 50 cm



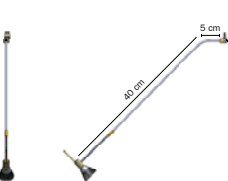
VA30700 classic 70 cm



VA30770 signo 70 cm



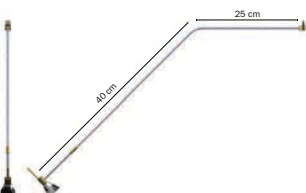
VA30365 sirius 40 cm



VA30465 sirius 50 cm



VA30665 sirius 65 cm



Each STAS spotlight is compatible with each fixture.

Base your choice on for instance the type of lighting, the type of light beam or the colour of the light.

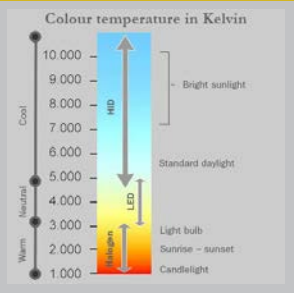
Led or halogen?

Led lighting is energy efficient, has a long lifespan and doesn't emit infrared radiation.

Halogen lighting has a higher light intensity and a warmer light colour. The disadvantage of halogen is its relatively high heat emission. In the long run, this can impact the colours of your artwork.

Matt or clear lens?

A clear lens creates a sharp beam of light. A matt lens creates a diffuse, soft light beam that spreads out more.



STEP 3: choose a spotlight

STAS led spot 3.5 W / 27°



Emits a narrow beam of light suitable for small paintings.

	VL10200
Power	3.5 W
Output equivalent	20 W
Max. consumption	3.5 W
Light intensity	200 lm
Infrared radiation	none
Light colour	warm white
Colour temperature	2700 K
Light beam	standard - diffuse
Beam angle	27°
Socket	MR11-GU4.0
Vibrational impact	low
Lifespan	40.000 hrs
Energy class	A+

STAS led spot 3.5 W / 95°



Emits a wide beam of light suitable for large artworks.

	VL10900
Power	3.5 W
Output equivalent	20 W
Max. consumption	3.5 W
Light intensity	200 lm
Infrared radiation	none
Light colour	warm white
Colour temperature	2700 K
Light beam	standard - diffuse
Beam angle	95°
Socket	MR11-GU4.0
Vibrational impact	low
Lifespan	40.000 hrs
Energy class	A+

STAS powerled 4 W matt



The closed housing avoids light spill at the back.

	VL10700
Power	< 4 W
Output equivalent	20 W
Max. consumption	3.4 W
Light intensity	170 lm
Infrared radiation	none
Light colour	neutral white
Colour temperature	3000 K
Light beam	standard - diffuse
Beam angle	30°
Socket	MR11-GU4.0
Vibrational impact	low
Lifespan	20.000 hrs
Energy class	A+

STAS halogen 20 W Kandolite clear



Equipped with a double coating on the reflector side, preventing light spill on the ceiling.

	VL10304
Power	20 W
Output equivalent	20 W
Max. consumption	20 W
Light intensity	150 lm
Infrared radiation	medium
Light colour	warm white
Colour temperature	2700 K
Light beam	standard
Beam angle	30°
Socket	MR11-GU4.0
Vibrational impact	low
Lifespan	3.000 hrs
Energy class	B

STAS halogen 20 W Kandolite matt



Equipped with a double coating on the reflector side, preventing light spill on the ceiling.

	VL10305
Power	20 W
Output equivalent	20 W
Max. consumption	20 W
Light intensity	150 lm
Infrared radiation	medium
Light colour	warm white
Colour temperature	2700 K
Light beam	standard
Beam angle	30°
Socket	MR11-GU4.0
Vibrational impact	low
Lifespan	3.000 hrs
Energy class	B

STAS offers 3 different adapters.

The choice of an adapter depends on 3 things:

1. the type of spotlight you'd like to use (led or halogen)
2. the number of spotlights you'd like to install
3. the number of meters of rail you'd like to install

Using multiple adapters

In case you would like to use more than the above mentioned number of meters or spots, you will have to use multiple adapters.

CAUTION:

Create independent circuits when using more than one adapter! Adapters must never be connected, neither directly nor indirectly. In short: NEVER connect two rail segments that are each connected to a different adapter! Exclusively connect rail segments that share one adapter.

Dimming of light

The current STAS adapters are not yet dimmable. We strongly advise against connecting your own switch or dimmer to the system. Be aware that if you do this anyway, all system warranty expires.

STEP 4: choose an adapter

Adapter 18 W



Adapter 60 W



Adapter 96 W



Number of spotlights

		Led 3.5 W	Led 4 W	Halogen
VT20500	Adapter 18 W	4	3	-
VT20400	Adapter 60 W	15	12	3
VT20300	Adapter 96 W	25	20	4
	Maximum number of meters of rail per adapter	16	16	8

Product information

STAS adapters			
	VT20500 STAS multirail adapter 18W	VT20400 STAS multirail adapter 60W	VT20300 STAS multirail adapter 96W
Input voltage	AC100-240 V ~ 50/60 Hz 0.7 A	AC100-240 V ~ 50/60 Hz 1.6 A	AC100-240 V ~ 50/60 Hz 2 A
Output voltage	DC 12 V == 1.5 A	DC 12 V == 5 A	DC 12 V == 8 A
Ampère	1.5 A	5 A	8 A
Dimensions (l x h x w)	75 x 86 x 36 mm	110 x 32 x 62 mm	149 x 38 x 65 mm
Weight	180 g	415 g	600 g
Connection	Input plug (EU) Output cable 3 m	Input cable (EU) 1.2 m Output cable 3 m	Input cable (EU) 1.5 m Output cable 3 m
Quality label	CE GS TÜV WEEE	UL CE GS TÜV WEEE ROHS	UL CE GS TÜV WEEE

STAP 5: choose hooks and cords

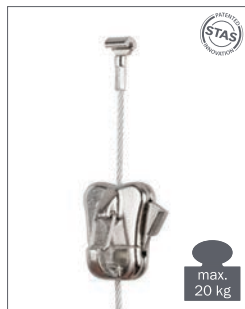
**STAS smartspring on
STAS cobra + perlon cord**



**STAS zipper on
STAS cobra + perlon cord**



**STAS zipper on
STAS cobra + steel cable**



**STAS zipper on STAS cobra +
steel cable (black or white)**



STAS zipper pro



NB: The STAS zipper pro can be applied in the same way as the STAS zipper.

Hanging your art is the very last step. To do that, you will need hooks and cords.

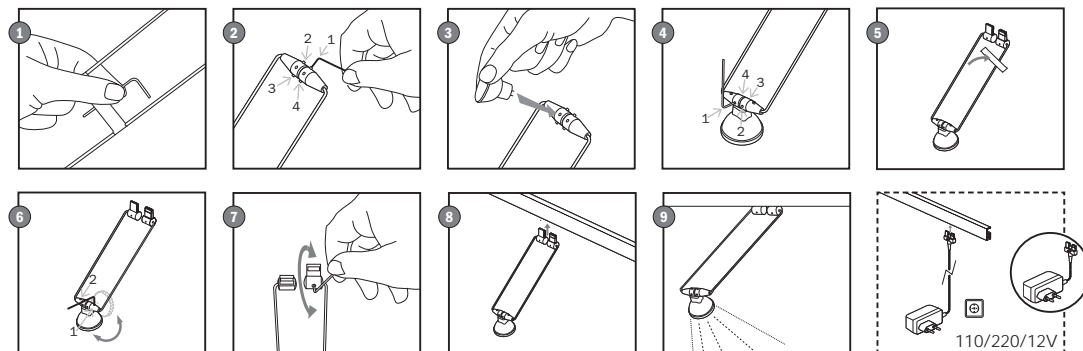
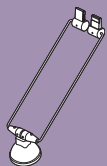
Consider two factors when choosing your hooks and cords:

1. the weight of the object you wish to hang
2. the look that appeals most to you

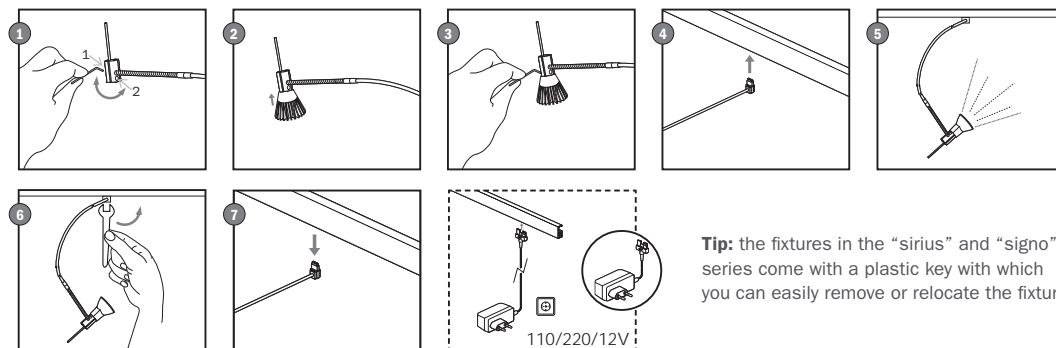
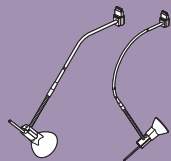
Choose one of four possible combinations.

STAS assembly instructions fixtures

STAS classic fixture



STAS signo + sirius fixture



Tip: the fixtures in the “sirius” and “signo” series come with a plastic key with which you can easily remove or relocate the fixture.

