



STAS
multirail
accessories



STAS multirail accessories

Assemble your STAS multirail system step by step. In this brochure we have created an overview of all rail types, light fixtures, spotlights, adapters, hooks and cords.

Step 1: choose a multirail	3
Step 2: choose a fixture	4
<ul style="list-style-type: none">• fixture “classic”• fixture “sirius”	<ul style="list-style-type: none">• fixture “signo”
Step 3: choose a spotlight	5
<ul style="list-style-type: none">• led spot 3.5 W 27°• led spot 3.5 W 95°• powered 4 W matt	
Step 4: choose an adapter	6
Step 5: choose hooks and cords	7
STAS assembly instructions fixtures	8

For assembly instructions of the rail systems:

<http://product.stasgroup.com/en/documentation/fitting-instructions.html>

STEP 1:
choose a multirail

STEP 2:
choose a fixture

STEP 3:
choose a spotlight

STEP 4:
choose an adapter

STEP 5: choose
hooks and cords

STAS multirail systems are picture rails with integrated 12 V power supply wires (low voltage). Thanks to these wires, it is possible to click a light fixture into the rail at any spot to illuminate your wall decor.

STAS offers five rail types:

Multirail for walls:

STAS multirail

The classic, patented 12 V rail.

STAS multirail crown

The multirail crown disappears behind your moulding of choice.

STAS multirail max

The multirail max features a top rim that closes the small gap between rail and ceiling.

Multirail for ceilings:

STAS multirail flat

The multirail flat can be installed almost invisibly in plasterwork or behind flat moulding.

STAS u-rail multi

The u-rail multi was specifically designed for drop ceilings.

STEP 1: choose a multirail

STAS multirail system



STAS multirail white
VH10150 150 cm
VH10200 200 cm
VH10300 300 cm



STAS multirail alu
VH30150 150 cm
VH30200 200 cm
VH30300 300 cm

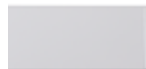
STAS multirail matching installation accessories

VE10200 STAS multirail end cap white
VE30200 STAS multirail end cap alu
VD10400 STAS multirail corner cap white
VD30400 STAS multirail corner cap alu

RD40100 STAS rail clip (metal, 3 per m²)
RD40200 STAS rail connector
SR30600 STAS screw torx
SR50700 STAS plug

VF50200 STAS multirail conductor 12 V straight
VF50100 STAS multirail conductor 12 V corner

STAS multirail max system



STAS multirail max white
VC10420 200 cm
VC10430 300 cm



STAS multirail max alu
VC30420 200 cm
VC30430 300 cm

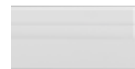
STAS multirail max matching installation accessories

VE10400 STAS multirail max end cap white
VE30400 STAS multirail max end cap alu
VD20500 STAS multirail max corner cap white
VD30500 STAS multirail max corner cap alu

RD40100 STAS rail clip (metal, 3 per m²)
RD40200 STAS rail connector
SR30600 STAS screw torx
SR50700 STAS plug

VF50200 STAS multirail conductor 12 V straight
VF50100 STAS multirail conductor 12 V corner

STAS multirail crown system



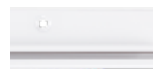
STAS multirail crown white
RC10420 200 cm
RC10430 300 cm

STAS multirail crown matching installation accessories

RD20500 STAS multirail crown corner connector white
RD20400 STAS multirail crown rail connector
SJ10200 STAS multirail crown screw
SR50700 STAS plug

VF50200 STAS multirail conductor 12 V straight
VF50100 STAS multirail conductor 12 V corner

STAS multirail flat system



STAS multirail flat white
RC10520 200 cm
RC10530 300 cm
(4 holes per m²)

STAS multirail flat matching installation accessories

RD20500 STAS multirail flat corner connector white
RD20400 STAS multirail flat rail connector
SJ10200 STAS multirail flat screw
SR50700 STAS plug

VF50200 STAS multirail conductor 12 V straight
VF50100 STAS multirail conductor 12 V corner

STAS u-rail multi system



STAS u-rail multi white
VP10200 200 cm
VP10300 300 cm
(8 holes per m²)



STAS u-rail multi alu
VP30200 200 cm
VP30300 300 cm
(8 holes per m²)



STAS u-rail multi black
VP20200 200 cm
VP20300 300 cm
(8 holes per m²)

STAS u-rail multi matching installation accessories

SP10100 STAS u-rail screw white
SP20100 STAS u-rail screw black
SP30100 STAS u-rail screw alu

VF50200 STAS u-rail multi conductor 12 V straight
VF50100 STAS u-rail multi conductor 12 V corner

STAS fixtures can be clicked easily into your STAS multirail. All fixtures are compatible with all STAS multirail systems.

How to choose

- The bigger the distance between light source and wall, the bigger the artwork that can be illuminated. In other words: choose a large fixture for lighting a large work of art.
- Is your wall 270 cm high or higher? We would recommend installing a fixture of 70 cm.

Adjusting

Fixtures do not need to be adjusted by any complex process. Simply prick a bulb into the fixture and you're done. All fixtures have a flexible part with which small adjustments to the beam angle can be made.

Warranty

1 year warranty applies to all fixtures.

STEP 2: choose a fixture

STAS classic fixture

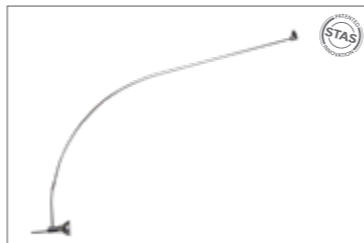


Length: 50 cm or 70 cm
Colour: white or chrome

STAS multirail classic fixtures

- | | |
|---------|---|
| VA10500 | STAS multirail fixture classic white 50 cm |
| VA10700 | STAS multirail fixture classic white 70 cm |
| VA30500 | STAS multirail fixture classic chrome 50 cm |
| VA30700 | STAS multirail fixture classic chrome 70 cm |

STAS signo fixture

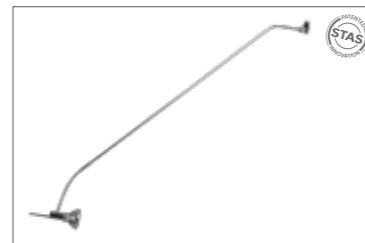


Length: 70 cm
Colour: chrome

STAS multirail signo fixtures

- | | |
|---------|---|
| VA30770 | STAS multirail fixture signo chrome 70 cm |
|---------|---|

STAS sirius fixture



Length: 40, 50 or 65 cm
Colour: chrome

STAS multirail sirius fixtures

- | | |
|---------|--|
| VA30365 | STAS multirail fixture sirius chrome 40 cm |
| VA30465 | STAS multirail fixture sirius chrome 50 cm |
| VA30665 | STAS multirail fixture sirius chrome 65 cm |

VA30500 classic 50 cm



VA30700 classic 70 cm



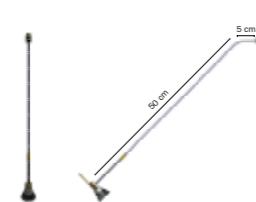
VA30770 signo 70 cm



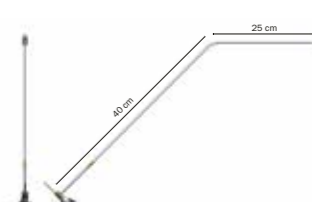
VA30365 sirius 40 cm



VA30465 sirius 50 cm



VA30665 sirius 65 cm



STEP 2: choose a fixture

Each STAS spotlight is compatible with each fixture.

Base your choice on for instance the type of lighting, the type of light beam or the colour of the light.

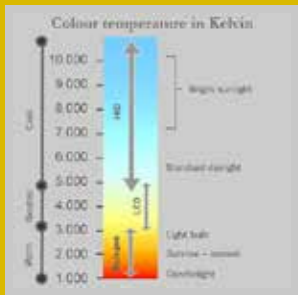
Led or halogen?

Led lighting is energy efficient, has a long lifespan and doesn't emit infrared radiation.

Halogen lighting has a higher light intensity and a warmer light colour. The disadvantage of halogen is its relatively high heat emission. In the long run, this can impact the colours of your artwork.

Matt or clear lens?

A clear lens creates a sharp beam of light. A matt lens creates a diffuse, soft light beam that spreads out more.



STEP 3: choose a spotlight

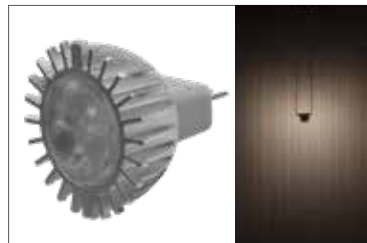
STAS led spot 3.5 W / 27°



Emits a narrow beam of light suitable for small paintings.

	VL10200
Power	3.5 W
Output equivalent	20 W
Max. consumption	3.5 W
Light intensity	200 lm
Infrared radiation	none
Light colour	warm white
Colour temperature	2700 K
Light beam	standard - diffuse
Beam angle	27°
Socket	MR11-GU4.0
Vibrational impact	low
Lifespan	40.000 hrs
Energy class	A+

STAS led spot 3.5 W / 95°



Emits a wide beam of light suitable for large artworks.

	VL10900
Power	3.5 W
Output equivalent	20 W
Max. consumption	3.5 W
Light intensity	200 lm
Infrared radiation	none
Light colour	warm white
Colour temperature	2700 K
Light beam	standard - diffuse
Beam angle	95°
Socket	MR11-GU4.0
Vibrational impact	low
Lifespan	40.000 hrs
Energy class	A+

STAS powered 4 W matt



The closed housing avoids light spill at the back.

	VL10700
Power	< 4 W
Output equivalent	20 W
Max. consumption	3.4 W
Light intensity	170 lm
Infrared radiation	none
Light colour	neutral white
Colour temperature	3000 K
Light beam	standard - diffuse
Beam angle	30°
Socket	MR11-GU4.0
Vibrational impact	low
Lifespan	20.000 hrs
Energy class	A+

STAS offers 3 different adapters.

The choice of an adapter depends on 3 things:

1. the type of spotlight you'd like to use (led or halogen)
2. the number of spotlights you'd like to install
3. the number of meters of rail you'd like to install

Using multiple adapters

In case you would like to use more than the above mentioned number of meters or spots, you will have to use multiple adapters.

CAUTION:

Create independent circuits when using more than one adapter! Adapters must never be connected, neither directly nor indirectly. In short: NEVER connect two rail segments that are each connected to a different adapter! Exclusively connect rail segments that share one adapter.

Dimming of light

The current STAS adapters are not yet dimmable. We strongly advise against connecting your own switch or dimmer to the system. Be aware that if you do this anyway, all system warranty expires.

STEP 4: choose an adapter

Adapter 18 W



Adapter 36 W



Adapter 84 W



Adapter 96 W



Number of spotlights

		Led 3.5 W	Led 4 W	Led 5 W	Halogeen
VT20500	Adapter 18 W	4	3	-	-
VT20036	Adapter 36 W	8	7	6	-
VT20084	Adapter 84 W	20	17	14	3
VT20300	Adapter 96 W	25	20	4	4
Maximum number of meters of rail per adapter		16	16	8	8

Productinformation

STAS adapters				
	VT20500 STAS multirail adapter 18W	VT20036 STAS multirail adapter 36W	VT20084 STAS multirail adapter 84W	VT20300 STAS multirail adapter 96W
Input voltage	AC100-240 V ~ 50/60 Hz 0.7 A	100-240VAC 50/60Hz	100-240VAC 50/60Hz	AC100-240 V ~ 50/60 Hz 2 A
Output voltage	DC 12 V == 1.5 A	12V DC 3A	12V DC 7A	DC 12 V == 8 A
Ampère	1.5 A	3A	7A	8 A
Dimensions (l x h x w)	75 x 86 x 36 mm	105 x 45 x 28.5 mm	155 x 60 x 37mm	149 x 38 x 65 mm
Weight	180 gr	220 gr	490 gr	600 gr
Connection	input plug (EU) output cable 3 m	input plug (EU) (US) 1.8 m output cable 3 m	input plug (EU) (US) 1.8 m output cable 3 m	input cable (EU) 1.5 m output cable 3 m
Quality label	CE GS TÜV WEEE	UL CE EMC RoHS REACH	UL CE EMC RoHS REACH	UL CE GS TÜV WEEE

STAP 5: choose hooks and cords

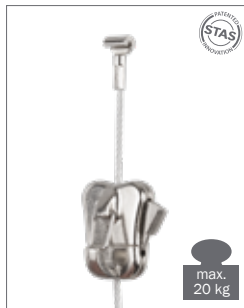
**STAS smartspring on
STAS cobra + perlon cord**



**STAS zipper on
STAS cobra + perlon cord**



**STAS zipper on
STAS cobra + steel cable**



**STAS zipper on STAS cobra +
steel cable (black or white)**



STAS zipper pro



NB: The STAS zipper pro can be applied in the same way as the STAS zipper.

Hanging your art is the very last step. To do that, you will need hooks and cords.

Consider two factors when choosing your hooks and cords:

1. the weight of the object you wish to hang
2. the look that appeals most to you

Choose one of four possible combinations.

For assembly instructions of the rail systems:

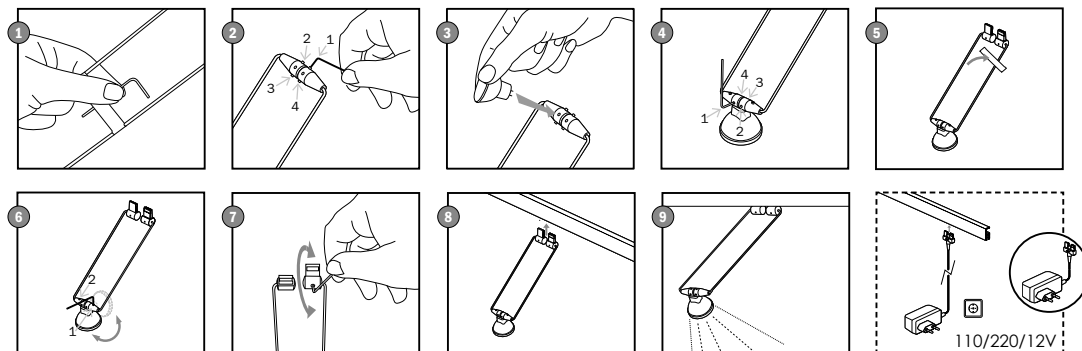
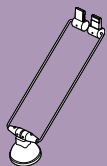
<http://product.stasgroup.com/en/documentation/fitting-instructions.html>



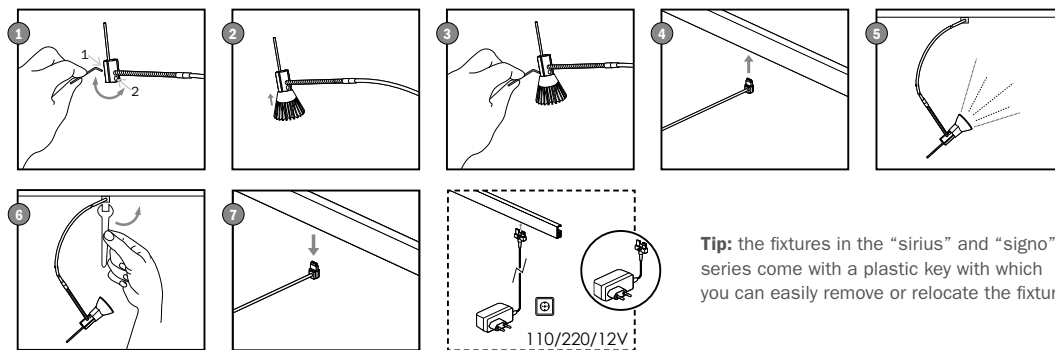
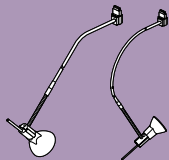
: www.stasgroup.com + YouTube

STAS assembly instructions fixtures

STAS classic fixture



STAS signo + sirius fixture



Tip: the fixtures in the "sirius" and "signo" series come with a plastic key with which you can easily remove or relocate the fixture.